

Panasonic
ideas for life

Network Fax

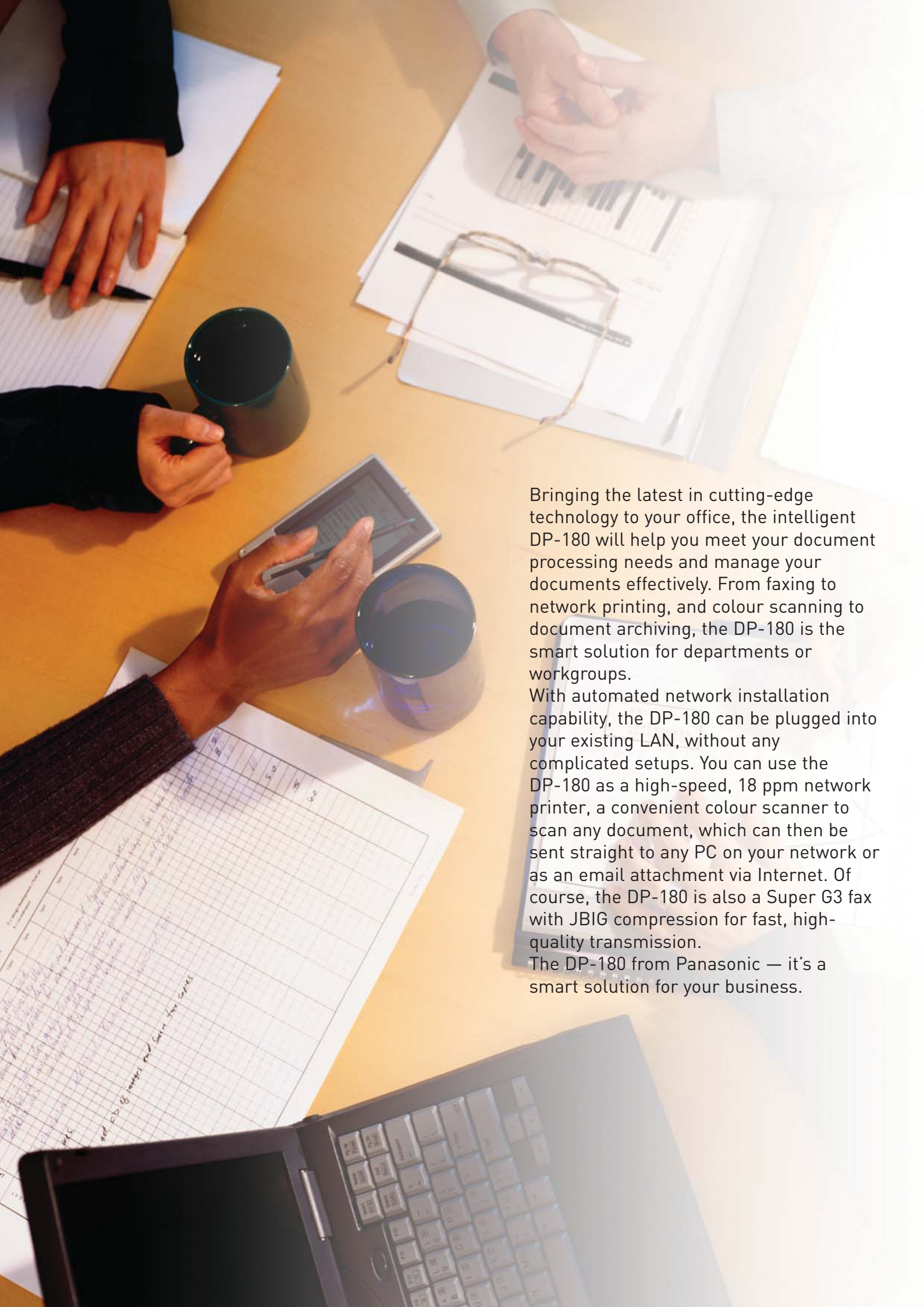
DP-180

Send it!
Print it!



WORKIO™

Network
Ready



Bringing the latest in cutting-edge technology to your office, the intelligent DP-180 will help you meet your document processing needs and manage your documents effectively. From faxing to network printing, and colour scanning to document archiving, the DP-180 is the smart solution for departments or workgroups.

With automated network installation capability, the DP-180 can be plugged into your existing LAN, without any complicated setups. You can use the DP-180 as a high-speed, 18 ppm network printer, a convenient colour scanner to scan any document, which can then be sent straight to any PC on your network or as an email attachment via Internet. Of course, the DP-180 is also a Super G3 fax with JBIG compression for fast, high-quality transmission.

The DP-180 from Panasonic — it's a smart solution for your business.

Super G3 Fax

Fully compliant with the ITU-T V.34 standard, the Super G3 33.6 kbps fax modem transfers an A4-size page in approx. 2.9 seconds. Thanks to advanced JBIG compression, fax documents are effectively transmitted while halftone images are clearly reproduced at the destination.



Colour Scanner

Scans colour documents via flatbed scanner or 50-sheet ADF, as PDF or JPEG data at a max. 300 x 300 dpi, or B/W documents as PDF or TIFF images at a max. 600 x 600 dpi. The flatbed scanner also allows you to scan a variety of media such as books and magazines, as well as smaller items like ID and insurance cards, or receipts.

Keys to Successful Office Workflow



User Friendliness

A QWERTY keyboard — just like on your PC — enables quick and easy entry (email addresses, file names, etc.). The easy-entry keyboard design also gives you other benefits like Quick Name Search and File Naming, while the DP-180's inner paper exit design lets you do all operations from the front, including paper loading.

Network Printer

The DP-180 enables high-speed printing via an Ethernet and/or USB interface at up to 18 ppm with true 600 x 600 dpi resolution or 1200 dpi equivalent resolution*. A built-in automatic duplex unit enables double-sided copying and printing for reduced paper consumption.

* With Panasonic image enhancement technology (Optional printer controller module is required.)



WORKIO
180

Super G3 Fax and Email



Quick Memory Transmission

As soon as the first page of a multi-page fax has been scanned, the DP-180 starts dialing. Transmission takes place as the additional pages are being scanned, saving time as well as increasing productivity.

Internet Fax (Send-to-Email)

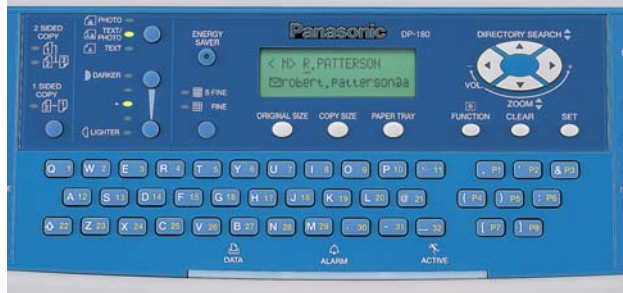
The DP-180 can send documents as TIFF images or PDF files, and transmit them as email attachments to PCs or other Internet fax machines, saving time and money.

Network Panafax® Desktop Software

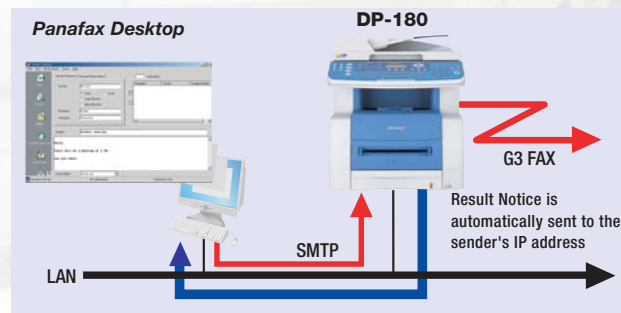
The Panafax® Desktop software allows users to send a fax directly from their PC without having to print it before transmitting. The PC fax capability increases productivity while decreasing paper consumption.

200-Station Auto Dialler

You can store up to 200 phone numbers or email addresses for rapid access via 40 One-Touch keys, or 160 abbreviated numbers.
* Up to 1,000 stations with optional Hard Disk Drive Unit.



A smart for your office



Network Colour Scanner



Scan-to-PC

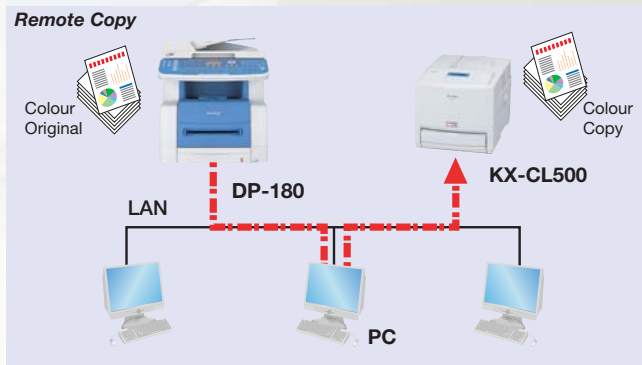
Scan-to-PC lets you digitise virtually any kind of document — even handwritten notes or sketches — and convert it to a PDF, TIFF or JPEG file and send it to a networked PC.

Document Management System software

Panasonic Document Management System software allows efficient document management, flexible editing and convenient sharing at the user's fingertips. Users can manage and edit documents right from their desktop with simple "drag and drop" operation.

Remote Copy

When you press the Remote Copy key, the DP-180 automatically sends the scanned data through the PC to a network printer for printing. This allows you to easily make colour copies of a colour document when a colour printer is connected to the LAN.



Standard Network Printer

Built-in Network Printing Capability

The DP-180 comes standard with a built-in network board and an Ethernet LAN port, so you can set it up as a network printer that can be used by PCs on your LAN network. No special options are required. In addition, the standard USB 1.1 interface allows direct connection to a dedicated PC.



High-resolution of 1200-equivalent x 600 dpi

In addition to standard 600 x 600 dpi print resolution, you can boost print resolution to 1200 dpi-equivalent x 600 dpi (in PCL/PS mode) by adding our optional printer controller. This gives crisp, clean printouts with superior legibility and halftone gradations — even with very tiny characters or complex images.

Standard Duplex Printing and Copying

For added convenience, the DP-180 comes standard with a duplex printing unit that enables you to easily print on both sides of the sheet. To keep your paper consumption to a minimum, you can also use duplex printing when printing out faxes or copying.

Automated Network Installation Capability*

The DP-180 allows simple network installation. Simply plug the network cable into the DP-180's Ethernet port, and the network information is automatically acquired from the server. No complex setup required.

*Requires a DHCP server on the network.

art fit our

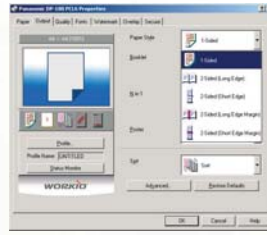


The DP-180's "wingless" compact chassis and inner paper exit design allow front operations, including paper loading.

Intuitive control with easy-to-use GUI software

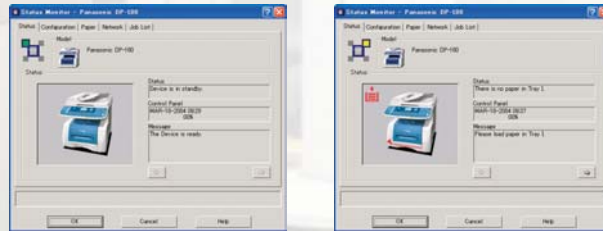
GUI Printer Driver

Easy-to-install graphical printer driver empowers users with full control of versatile printing functions right from the desktop. From the intuitive tabbed interface to on-screen graphic preview of job settings, everything is designed to maximise ease of use, and eliminate errors.



Network Status Monitor

Status monitor lets the user monitor the DP-180's status directly from their desktop, including print job status, paper jams, machine configuration, and much more. So, for instance, you'll always know before paper or toner runs out.



Completion Notice

As soon as a print job is completed, the DP-180 automatically sends a Completion Notice to the user's desktop to notify them that the job has been completed, eliminating needless trips to check the machines.

Security Print/Mailbox*

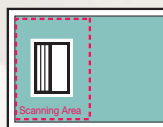
Security printing for up to 100 users is available. Simply print directly to the Security Print Mailbox* and the DP-180 stores that data until the user retrieves it at the machine by entering an 8-digit user ID and 4-digit password. This is extremely useful when generating sensitive and confidential documents.

*Only available if the optional hard disk unit is installed.

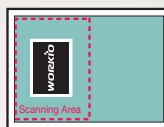
Copying Versatility

Double Exposure for Double Savings

By selecting the Double Exposure key located on the control panel, users can make quality copies of small double-sided documents on a single sheet of paper without the black borders — even if the platen cover is open. This is especially convenient for copying small double-sided originals such as ID and insurance cards, cheques, and receipts.



First Pass-Image#1



Second Pass-Image#2

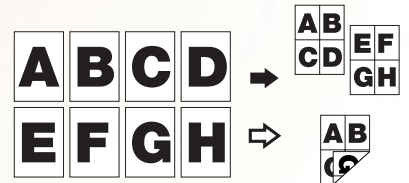


Print

WORKiO Original

N-in-1 Print/Copy

N-in-1 enables copying of multiple originals onto a single sheet of paper, accelerating document production while reducing paper consumption. Also, the double-sided copying and printing capability comes standard with the DP-180.



Superior Performance

Fast Processing

Powered by a high-performance 200-MHz microprocessor and custom-developed LSIs, the DP-180's high-speed image processing and quality enable high-speed printing and multi-task operations.



Extended Reliability

The Check & Call function automatically reports low toner status and certain mechanical problems to a service centre while the Remote Diagnostic System enables expert technicians to quickly troubleshoot and provide solutions via a telephone line or the internet.



These functions are not available in certain destinations.

Options

Flash Memory

4MB Flash Memory
UE-410047
8MB Flash Memory
UE-410048



Handset Kit
UE-403172
(Not available in certain destinations)

**550-sheet
2nd Paper Feed
Module**
DA-DS188



Printer/Network Printer

Expansion Board
DA-EM600
(Optional expansion board is not required in certain destinations)

PCL Printer Controller Module
DA-PC188

**PS/PCL Multi Page Description
Language Controller Module**
DA-MC188

Image Memory

Image Memory
(16MB) DA-SM16B
(64MB) DA-SM64B
(128MB) DA-SM28B
(Not available in certain destinations)

Hard Disk Drive Unit

Hard Disk Drive Unit
DA-HD19

Software

Accounting Software
DA-WA10

Consumables



**Drum
cartridge**
DQ-UH34H



**Toner
cartridge**
DQ-UG16H

DP-180 Specifications

General function

Type	Desktop
Print Process	Laser Indirect Electrostatic
Developing Process	Dry Single Component
Automatic Document Feeder	50 sheets (A4, 75 g/m ²)
Paper Feed	Std. 250 sheets paper tray unit x 1 + 1-sheet bypass Max. 800 sheets with option
Paper Weight	Paper Tray: 60 to 105 g/m ² Bypass: 60 to 165 g/m ²
Power Requirements	AC 220 – 240 V, 50/60 Hz
Power Consumption	
Max.:	1 kW
Power Saver mode:	Approx. 20 Wh
Sleep mode:	Approx. 12 Wh
Dimensions (W x D x H)*1 (Excluding optional equipment)	462 x 506 x 523 mm
Weight*1 (Excluding optional equipment)	Approx. 22 kg

G3 Fax function

Compatibility	ITU-T Group 3, ECM
Modem Speed	33.6 kbps
Coding Scheme	JBIG/MMR/MR/MH
Transmission Speed*2	Approx. 2.9 sec.
Scanning Speed*3	2.9 sec. (A4 portrait in Standard or Fine mode)
Scanning Resolution	
Standard:	8 dots/mm x 3.85 lines/mm
Fine:	8 dots/mm x 7.7 lines/mm
Super Fine:	16 dots/mm x 15.4 lines/mm
600 dpi:	600 x 600 dpi
Effective Scanning Width	207 mm (A4)
Recording Resolution	Max. 600 x 600 dpi
Standard Memory*4	2 MB (approx. 120 pages)
Optional Memory*4 *6	Base memory plus 4 MB (320 pages)/ 8 MB (640 pages)
No. of Auto Dialers	200 (Max. 1,000 with optional HDD)

Digital Copier function

First Copy Time	Approx. 10 sec. (A4)
Resolution	600 x 600 dpi
Gray Scale	256 steps
Multi Copy Speed*5	18 cpm
Maximum Original Size	A4, Foolscap*7
Copy Size	A4 – A5*8, Foolscap*9
Copy Ratio	Enlargement (fixed) 141 %, 137 % Reduction (fixed) 97 %, 90 %, 71 %, 64 %
Zoom (variable)	50 – 200 % (in 1 % increments)
Multiple Copy	1 to 999, Automatic reset to 1
Exposure Controller	Text, Text/Photo, Photo
Sort Memory	
Standard	16 MB
Optional*6	Base Memory plus 16 MB/64 MB/128 MB, 12 GB (with optional HDD)

Network Printer function

Printer Interface	Ethernet 10Base-T/100Base-TX
Local Printer Interface	USB1.1
Printer Language	
Standard	Panasonic Printing System for Windows®
Option	PCL 6 Emulation, Adobe® PostScript® 3™
Printing Speed*5	18 ppm
Paper Size	A4 – A5, Foolscap*9, Envelope*9
Printing Resolution	1,200 dpi equivalent x 600 dpi (PCL, PS) 600 dpi x 600 dpi, 300 dpi x 300 dpi (GDI, PCL, PS)
Printer Memory	20 MB
Compatible Operating Systems	Windows® XP/2000/Server 2003*10/98/Me, Windows NT® 4.0 MacOS 8.6 – 10.2 (PS only)

Network Scanner function

Network Scanner Interface	Ethernet 10Base-T/100Base-TX
Scanning Size	A4 – A5, Foolscap*7
Scanning Resolution	
Colour :	75 x 75 dpi, 150 x 150 dpi, 300 x 300 dpi
Black & White :	150 x 150 dpi, 300 x 300 dpi, 600 x 600 dpi
Scanning Speed	
Colour :	Approx. 12 sec
Black & White :	Approx. 2.9 sec
Coding Scheme	
Colour :	JPEG
Black & White :	JBIG/MMR/MR/MH
Data Format	
Colour :	JPEG, PDF
Black & White :	TIFF, PDF

Send to Email / Internet Fax function

Compatibility	IETF RFC 2305, ITU-T T.37
Communication Protocol	TCP/IP, SMTP, POP3, MIME, LDAP*6
Network Connectivity	10BASE-T Ethernet/100BASE-TX (IEEE802.3)
Data Format*11	TIFF-FX (Profile S/F/J), PDF, JPEG

Notes

- Dimensions and weight are approximate.
- Transmission time applies to memory transmission of text data using only ITU-T Image No.1 between the same models at maximum modem speed. Transmission time may vary in actual usage. Usually public telephone lines can only support communication speeds of 28.8 Kbps or lower. Via PBX, transmission speed may fall back to a lower speed.
- Scanning speed applies to the feeding process from the top to the end of a single page test chart. The time for the feeding process does not include the time that it takes for the top edge of the page to reach the scanning point and page ejection. Time for entire storing process is not applied.
- Based on ITU-T Image No.1 scanned in Standard mode.
- Speeds are contingent upon applications, machine configuration, and status. Individual speeds may vary.
- May not be available in certain destinations.
- From ADF only
- Standard paper tray and Bypass only
- Bypass only
- *10 Available in the 3rd quarter of 2004
- *11 Internet Fax only supports TIFF-FX format.

Design and specification are subject to change without notice. Not all options may be available at the time of notification.



Microsoft® Windows® and Windows NT® are registered trademarks of Microsoft Corporation. Adobe®, PostScript®, PostScript®3, PDF and PostScript logo® are trademarks of Adobe Systems, Inc. PCL is an either trademark or registered trademark of Hewlett-Packard Company and/or its subsidiaries. WORKIO™ is a trademark of Matsushita Electric Industrial Co., Ltd. All other brand or product names are the property of their respective holders.



As an Energy Star® partner, Panasonic has determined that this product meets the Energy Star® guidelines for energy efficiency.

ISO 9001 Quality Management System

Our business processes which produce document, information and network products, from manufacturing to marketing, conform to ISO9001 Quality Management Systems standard. Design, development, manufacture, installation, repair and maintenance of document, information and network products, their associated devices and consumables. In addition, the plants outside Japan have acquired ISO 9001 certification.



Panasonic®

